



## Safe, secure and protected

Your Wellmark health insurance coverage keeps you safe, secure and protected from more than the cost of health care. Just by being a member, you and your dependents have exclusive, free access to identity protection services called IDX™ Identity. It's just another way you get more as a Wellmark member.

### Priceless peace of mind

Join thousands of people around the country who have already chosen IDX Identity for identity protection services.

### With IDX Identity, you can:

- Monitor your credit record.
- Keep track of your online activity 24 hours a day, seven days a week.
- Have access to complete identity recovery if fraudulent activity is found.



**Enroll in identity protection services today!**

**Register or sign in to myWellmark® at myWellmark.com to get started.**

- 1.** Select **Identity Protection** from the bottom of the myWellmark homepage. On the mobile app, this is towards the bottom of the navigation menu.
- 2.** Select **Enroll Now** from the IDX home page.
- 3.** Fill out the **Group ID and Subscriber ID** (also known as your Wellmark ID number). Both are found on your Wellmark ID card.
- 4.** Enter your personal information and create a **username** and **password**.
- 5.** To **activate credit monitoring**, enter your birth date and Social Security number.



**Rather enroll over the phone?**

**Just call 866-486-4812**

**and make sure you have your**

**Wellmark ID card handy.**



Identity protection services aren't the only ways you **get more for being a Wellmark member.**

**As part of your health plan, you also have access to products and services like:**



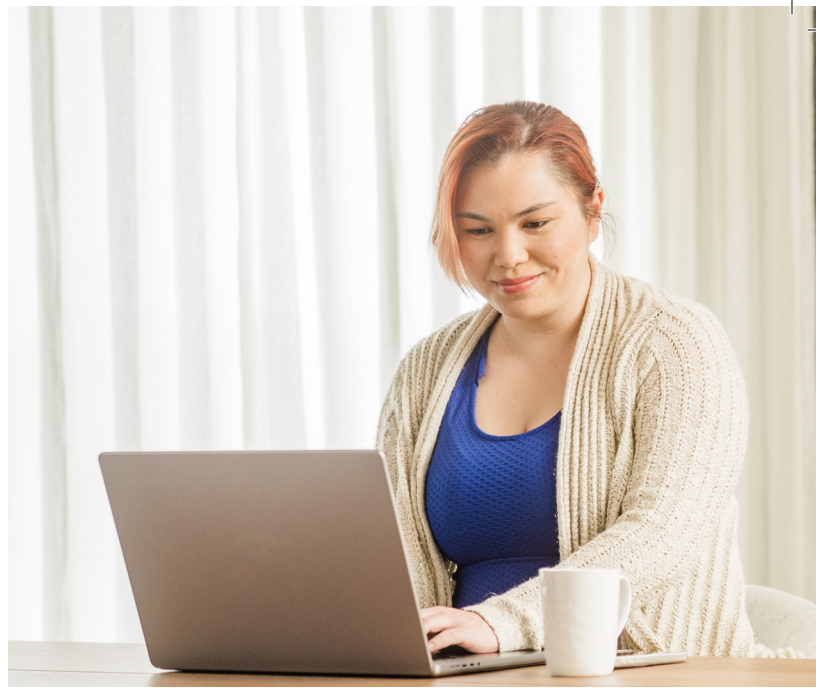
**myWellmark®**

Your one-stop-shop for tools, resources and insights to help you manage health care spending and live a healthier life.



**BeWell 24/7®**

Get connected with a real person who can help you with a variety of health-related concerns. Just call **844-84-BEWELL (239355)**.



**Blue365®**

Find exclusive ways to save on top wellness services and products you use every day.



**Blue<sup>SM</sup>**

Simply visit **Wellmark.com/Blue** to stay informed on health plan updates and the latest in health and wellness.



Wellmark Blue Cross and Blue Shield of Iowa, Wellmark Health Plan of Iowa, Inc. and Wellmark Blue Cross and Blue Shield of South Dakota are independent licensees of the Blue Cross and Blue Shield Association. Blue Cross®, Blue Shield® and the Cross® and Shield® symbols, Blue365® are registered marks and Blue<sup>SM</sup> is a service mark of the Blue Cross and Blue Shield Association, an association of independent Blue Cross and Blue Shield Plans. Blue365® is a discount program available to members who have medical coverage with Wellmark. This is not insurance.

Wellmark®, myWellmark®, and BeWell 24/7® are registered marks of Wellmark, Inc.

IDX™ Identity is an independent company providing identity protection services on behalf of Wellmark Blue Cross and Blue Shield.