



**Public Health**  
Prevent. Promote. Protect.



# LOCAL PUBLIC HEALTH in Iowa

---

PRESENTED BY KEVIN GRIEME, MS  
SIOUXLAND DISTRICT HEALTH DEPARTMENT  
REPRESENTING THE  
IOWA COUNTIES PUBLIC HEALTH ASSOCIATION

# Local Public Health in Iowa

---

## Local public health in all 99 counties

- 98 county boards of health
- 1 city boards of health (Dubuque)
- 1 district board (Siouxland)

## Iowa Demographics

66 counties with a population <20,000

22 counties with a population of 20,000 – 50,000

5 counties with a population of 50,000 – 100,000

6 counties with a population >100,000

# What is Public Health

---

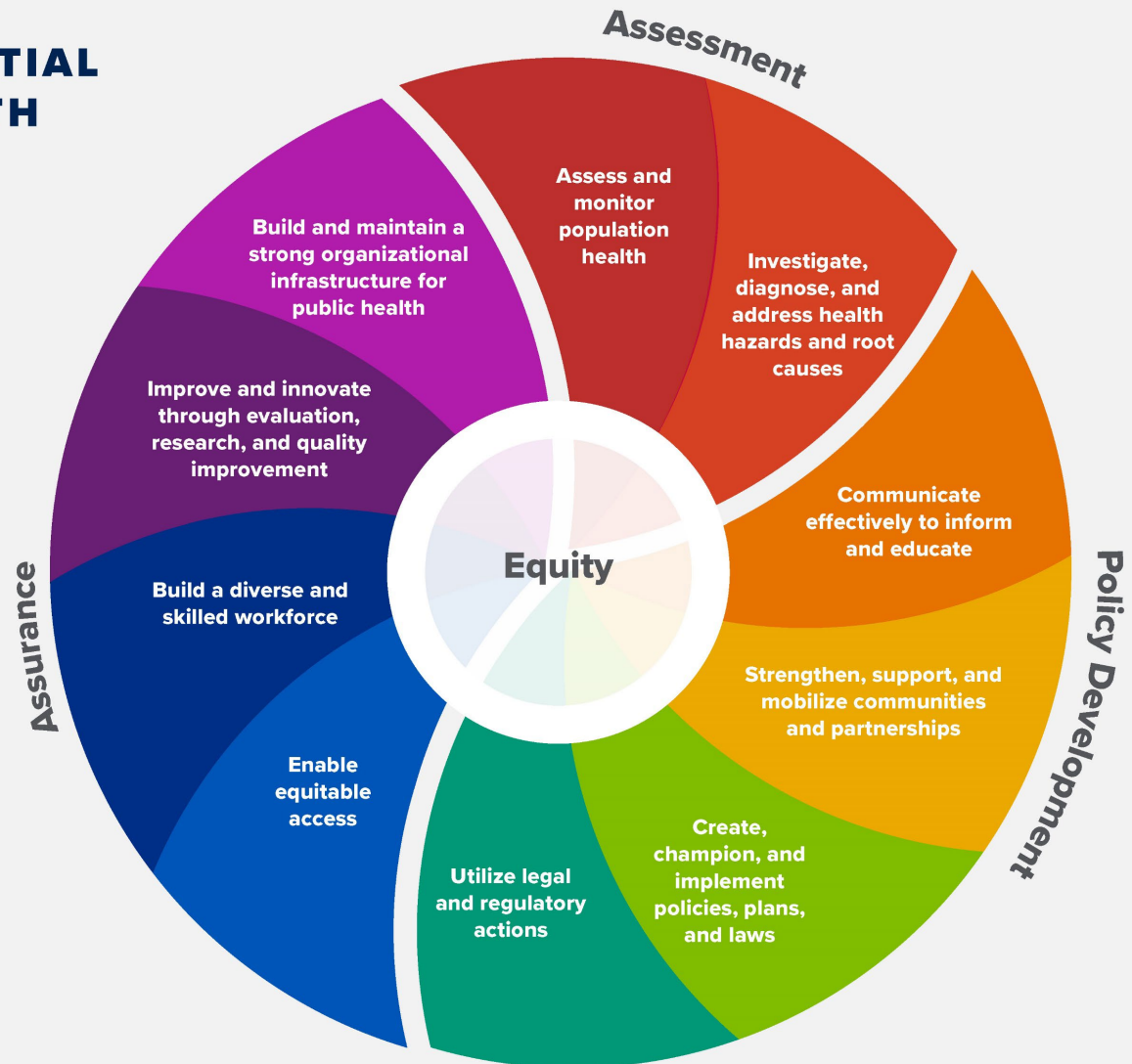
Public health promotes and protects the health of people and the communities where they live, learn, work and play.

While a doctor treats people who are sick, those of us working in public health try to prevent people from getting sick or injured in the first place. We also promote wellness by encouraging healthy behaviors.

# THE 10 ESSENTIAL PUBLIC HEALTH SERVICES

*To protect and promote the health of all people in all communities*

The 10 Essential Public Health Services provide a framework for public health to protect and promote the health of all people in all communities. To achieve optimal health for all, the Essential Public Health Services actively promote policies, systems, and services that enable good health and seek to remove obstacles and systemic and structural barriers, such as poverty, racism, gender discrimination, and other forms of oppression, that have resulted in health inequities. Everyone should have a fair and just opportunity to achieve good health and well-being.



Created 2020

# Public Health in Action



# Local Board of Health Composition & Responsibility

---

Consists of 5 or 7 members

One member must be a licensed physician

Serves 3-year terms

Appointed by the county board of supervisors

Has jurisdiction over public health matters

Accountable for meeting state standards for service delivery and achieving desired outcomes

Directly oversees public health staff

Provide certain mandated public health services

# Local Public Health Current Issues and Challenges

---

Sustainable Funding - to ensure quality in public health services, utilization of evidence-based programs and measurable outcomes and highly trained workforce

Maintaining trained a public health workforce.

Public Health Infrastructure

# How to Engage In Public Health

---

**Get to know your local public health administrator**

**Get to know your local board of health members**

**Become familiar with specific services and programs of your local health department**

**Learn what is being provided by other entities in your county that are relevant to the outcomes of your community's public health**

**Study your county's public health needs assessment and improvement plan**

**Become a champion for public health – *communicate with your community about the work of public health and advocate at all levels for sustainable funding of local public health***